



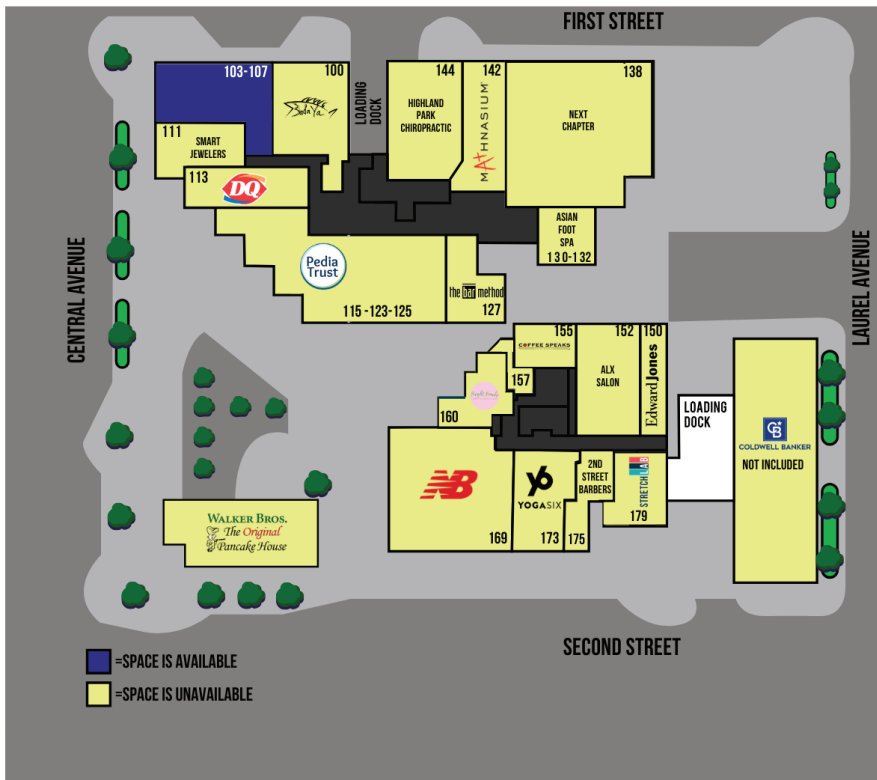
Craig/Steven Development Corporation
A STRUSINER ORGANIZATION

PORT CLINTON SQUARE

600-610 CENTRAL AVENUE | HIGHLAND PARK, IL



For more information, please contact Steve Schwartz | 312-228-2157 | steve.schwartz@am.jll.com



SPACE	TENANT	SQ.FT.
1	Walker Brothers	4,910
100	Sushi Badaya, Inc.	2,523
103-107	AVAILABLE	2,446
111	Smart Jewelers	1,310
113	Dairy Queen	1,489
115-123-125	Pedia Trust	3,294
127	The Bar Method	2,484
130-132	Asian Foot Spa	1,950
138	Next Chapter	3,340
142	Mathnasium	1,510
144	Highland Park Chiropractic	1,786
150	Edward Jones	1,244
151-152	ALX Salon	3,061
155	Coffee Speaks	1,233
157	Heidi Hess	655
160	Bright Bowls	1,724
169	New Balance	3,995
173	Yoga Studio	2,285
175	2nd Street Barbers	768
179	Stretch Lab	1,843



Scan QR Code to View Brochure

GLA: 40,278 Square Feet | Parking: 181 Spaces

401 Huehl Road | Suite 1-A | Northbrook, Illinois 60062 | P 847-564-5740 | F 847-564-5635